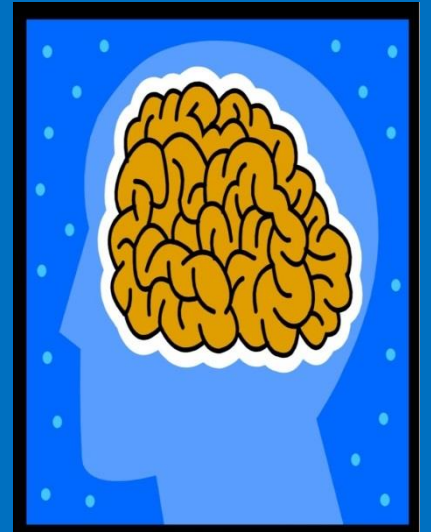
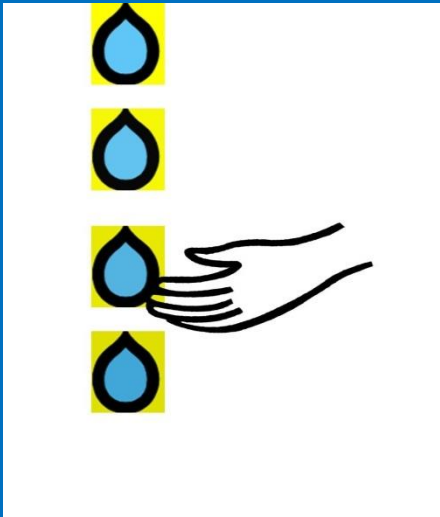
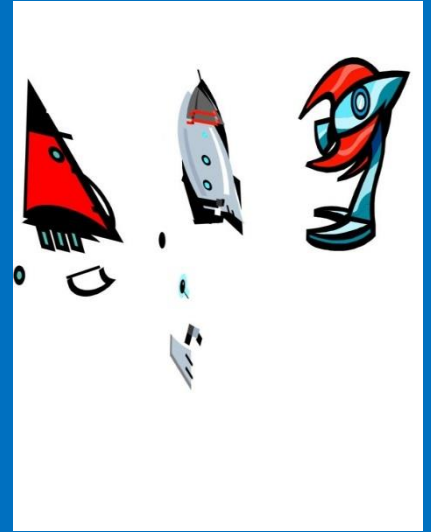


Building Learning Power

We are learning to learn



Taking charge of your learning just like Rhianna Reflective.



What is meta-learning?

When you use this learning muscle, you:

- know yourself as a learner
- know about how you learn best
- know whether (and when) you prefer to learn alone or with others
- can talk about how learning works for you
- know your strengths and weaknesses as a learner
- are interested in becoming a better learner
- use BLP learning muscles without even thinking about them!



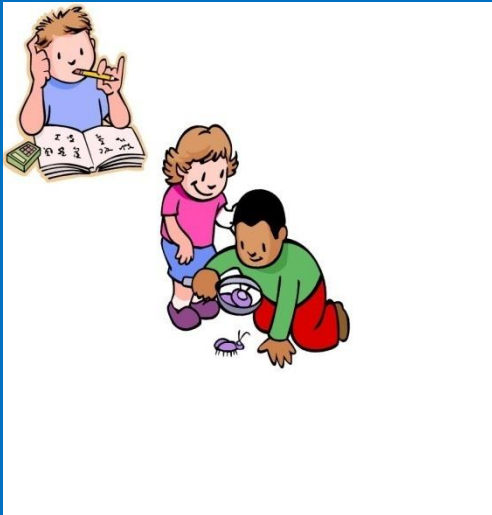
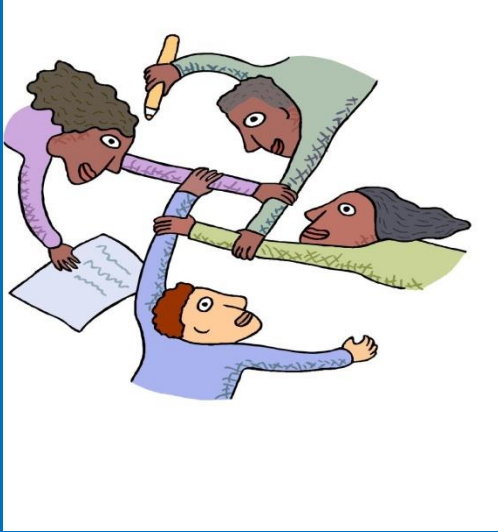
I learn best when...



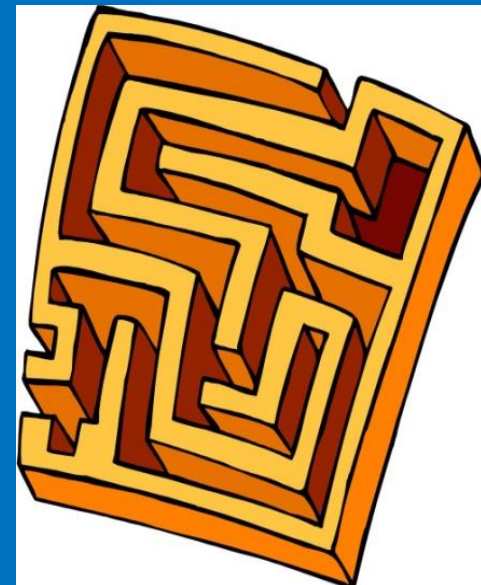
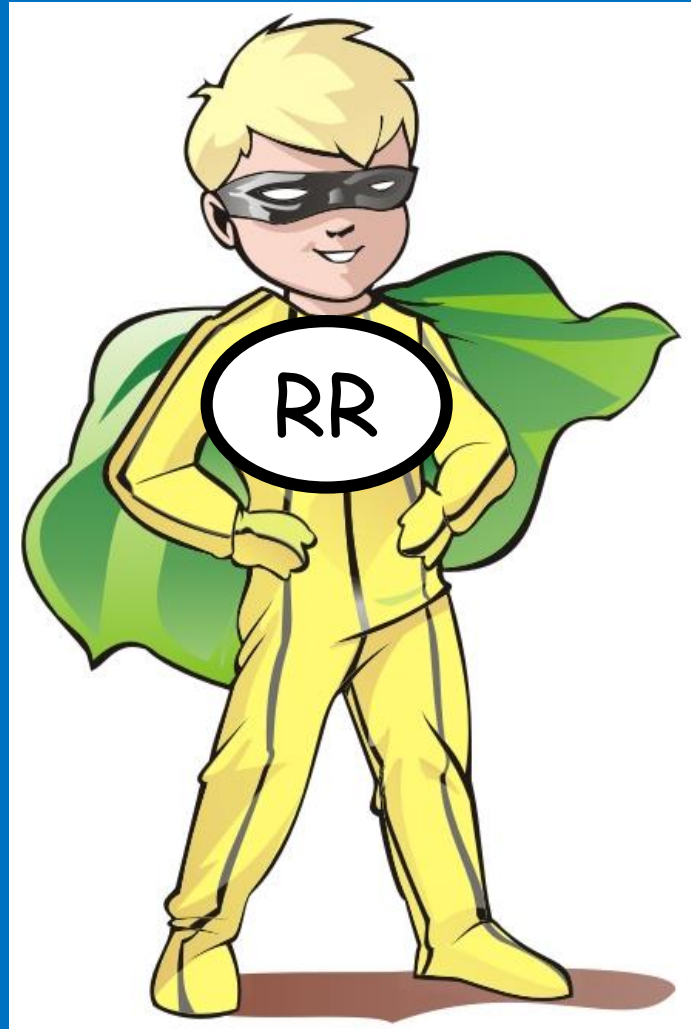
I don't learn best when...



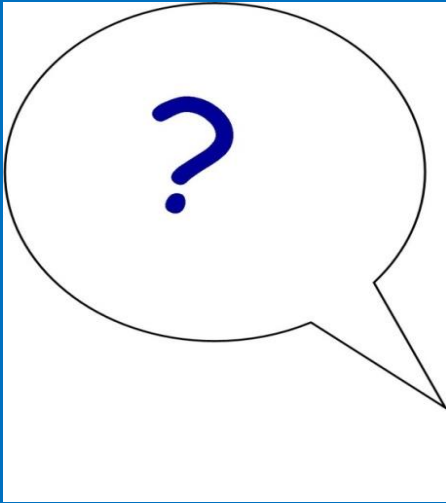
Learning with and from others just like *Ruby Relationships*.



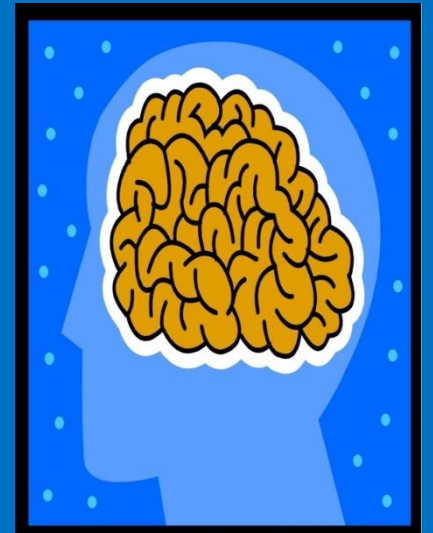
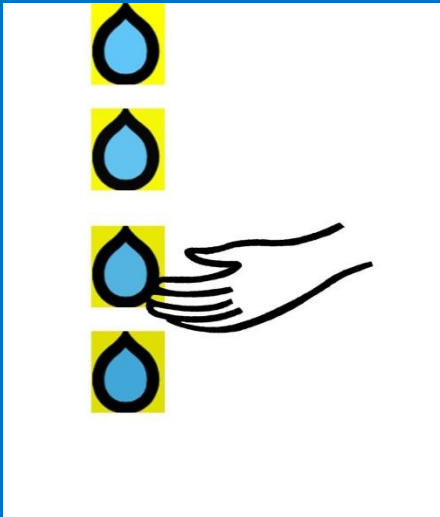
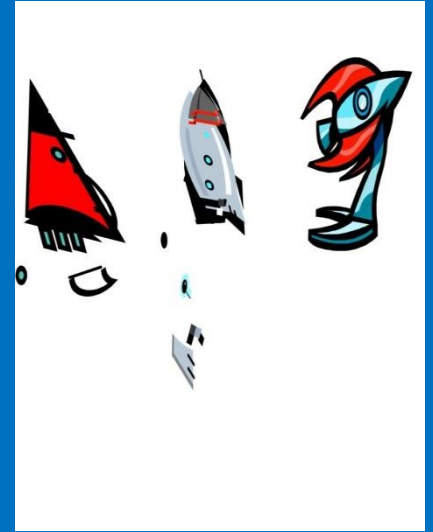
Enjoying the feeling of learning just like *Robin Resilience*



Using many ways of thinking just like **Ricky Resourceful**.



Taking charge of your learning just like Rhianna Reflective.



Which learning muscle do you think is the most important and why?

