

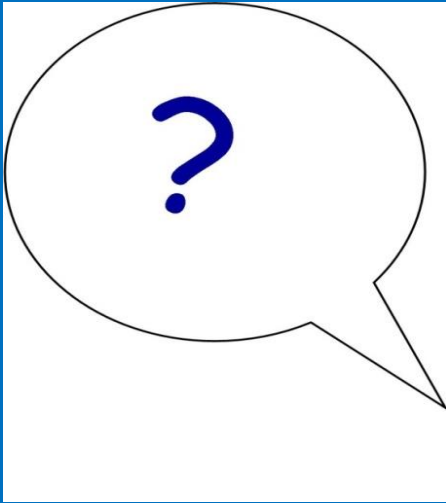
Building Learning Power



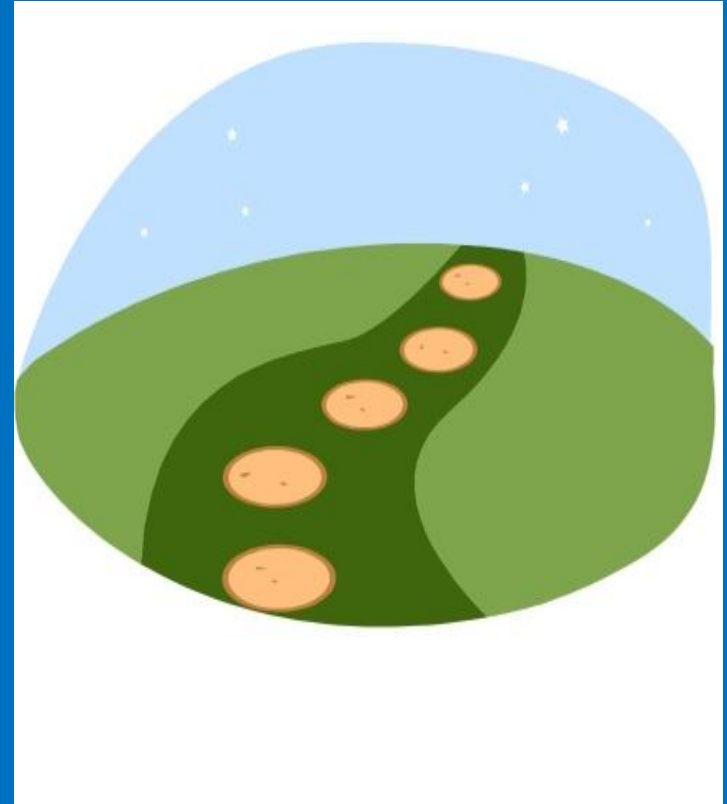
We are learning to learn



Using many ways of thinking just like **Ricky Resourceful**.



Which learning muscle do think this is?



Reasoning is when you are thinking about something in a logical, sensible way

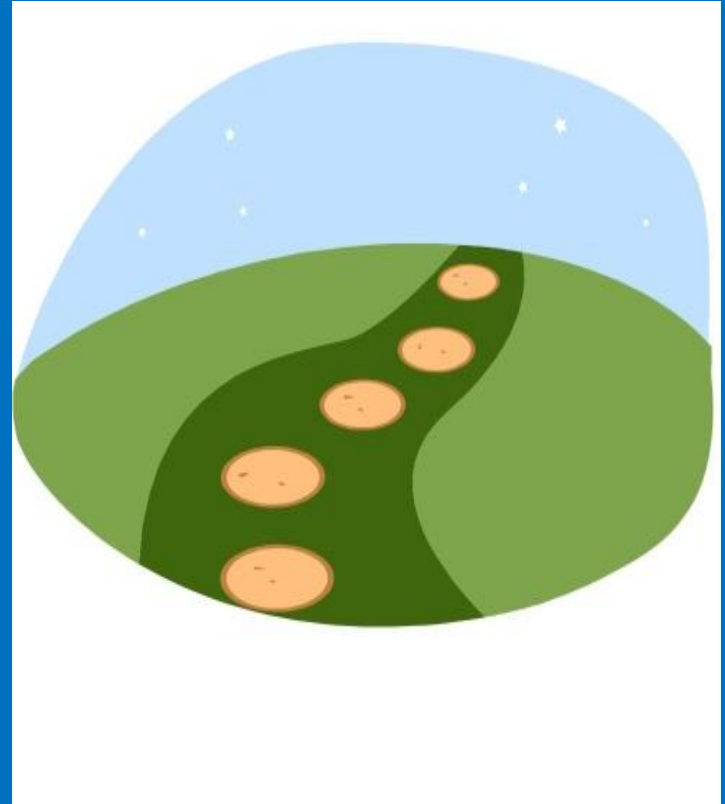
Which animal is the odd one out and explain why?



Which animal is the odd one out and explain why?

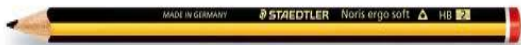
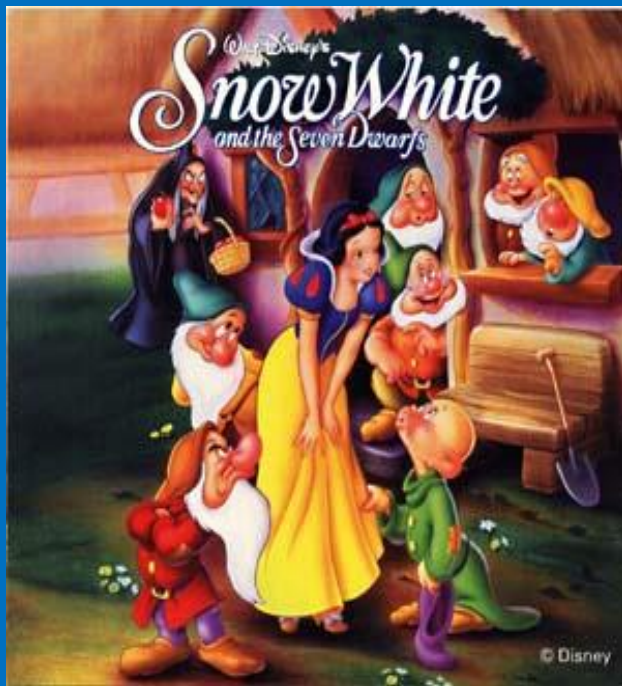
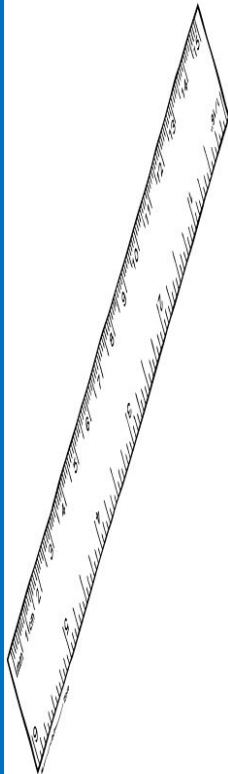


Take Two

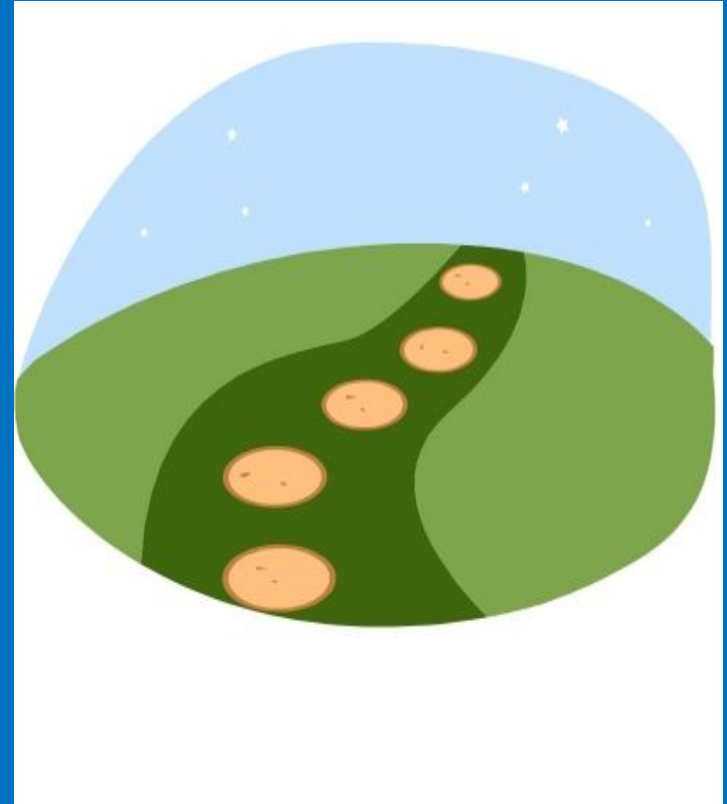


Choose two items in the next slide to link together. You must explain why you have chosen the two items go together.

Take Two

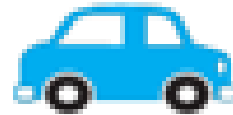
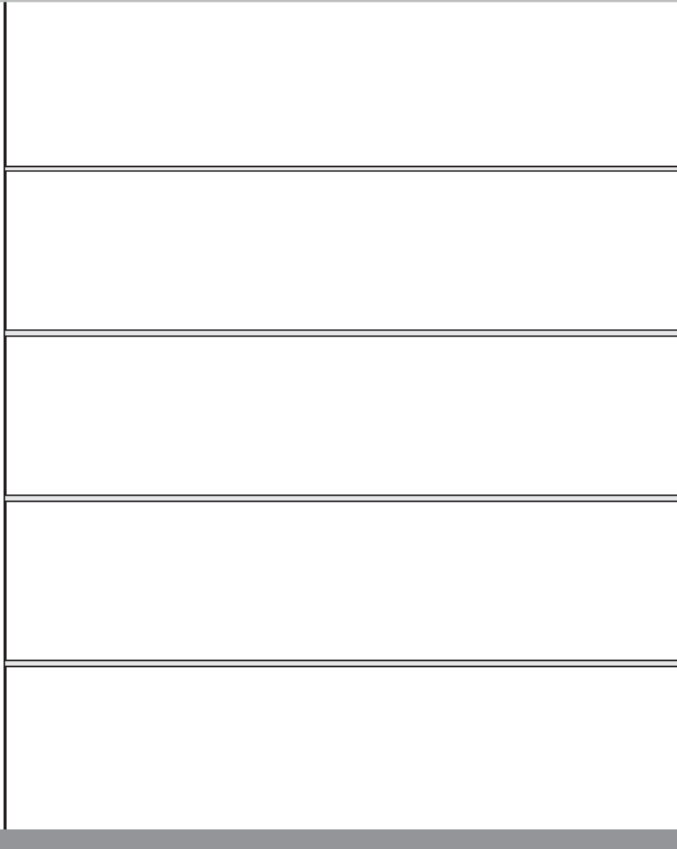
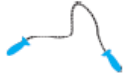










Maths reasoning



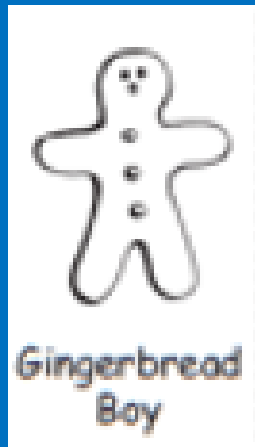
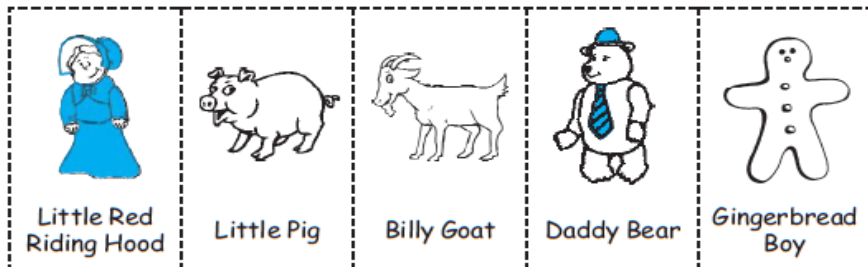
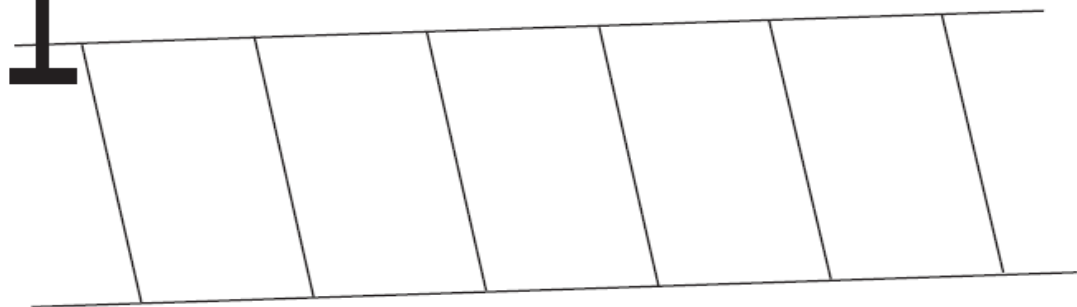
In the next two slides, follow the numbered steps to place the objects/characters in the correct places.

TOYS




1. The  boat is on the middle shelf.
2. The  skipping rope is on the top shelf.
3. The  car is on the bottom shelf.
4. The  ball is next to the  boat.
5. The  teddy is in between the  boat and the  car.



Bus Stop




1.  Little Red Riding Hood is last in the queue.

2.  Billy Goat is next to  Daddy Bear.

3.  Gingerbread Boy is first in the queue.

4.  Little Pig is behind  Gingerbread Boy.

5.  Daddy Bear is in the middle of the queue.



*What is the hedgehog
doing?
Why is it doing this?*